

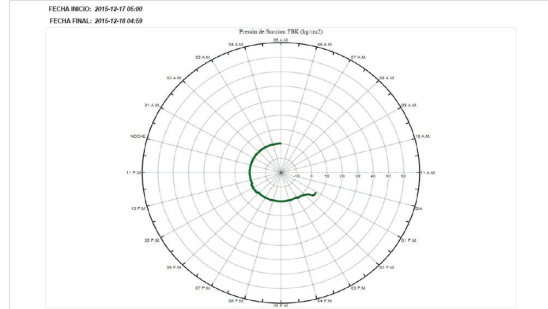
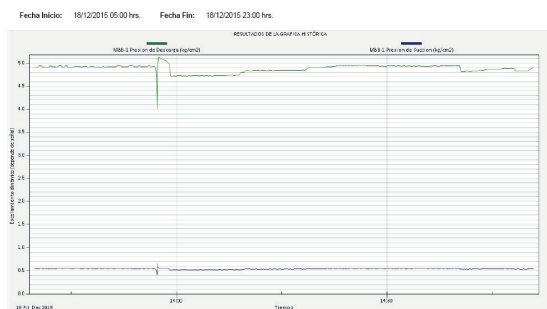
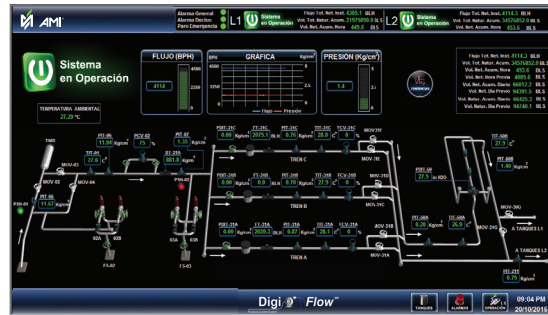
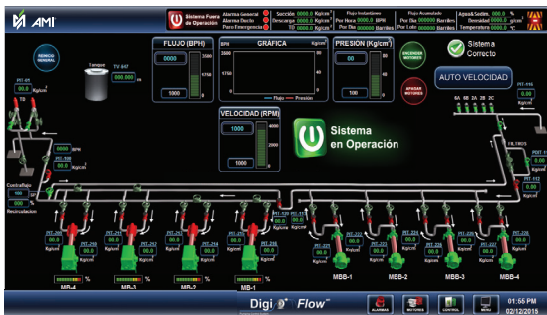
DigiFlow™

Integral monitoring and control system for pumping stations

AMI Automation, now part of Resonac, is a global leader in automation and control solutions. We specialize in designing, manufacturing, and implementing innovative technologies to enhance process efficiency across industries such as steel, mining, cement, pulp & paper, and oil & gas.

DigiFlow™

DigiFlow™ is an integral hardware - software system that allows the optimization of fluid transport systems based on algorithms, for **operational security safety, increased reliability and operational intelligence.**



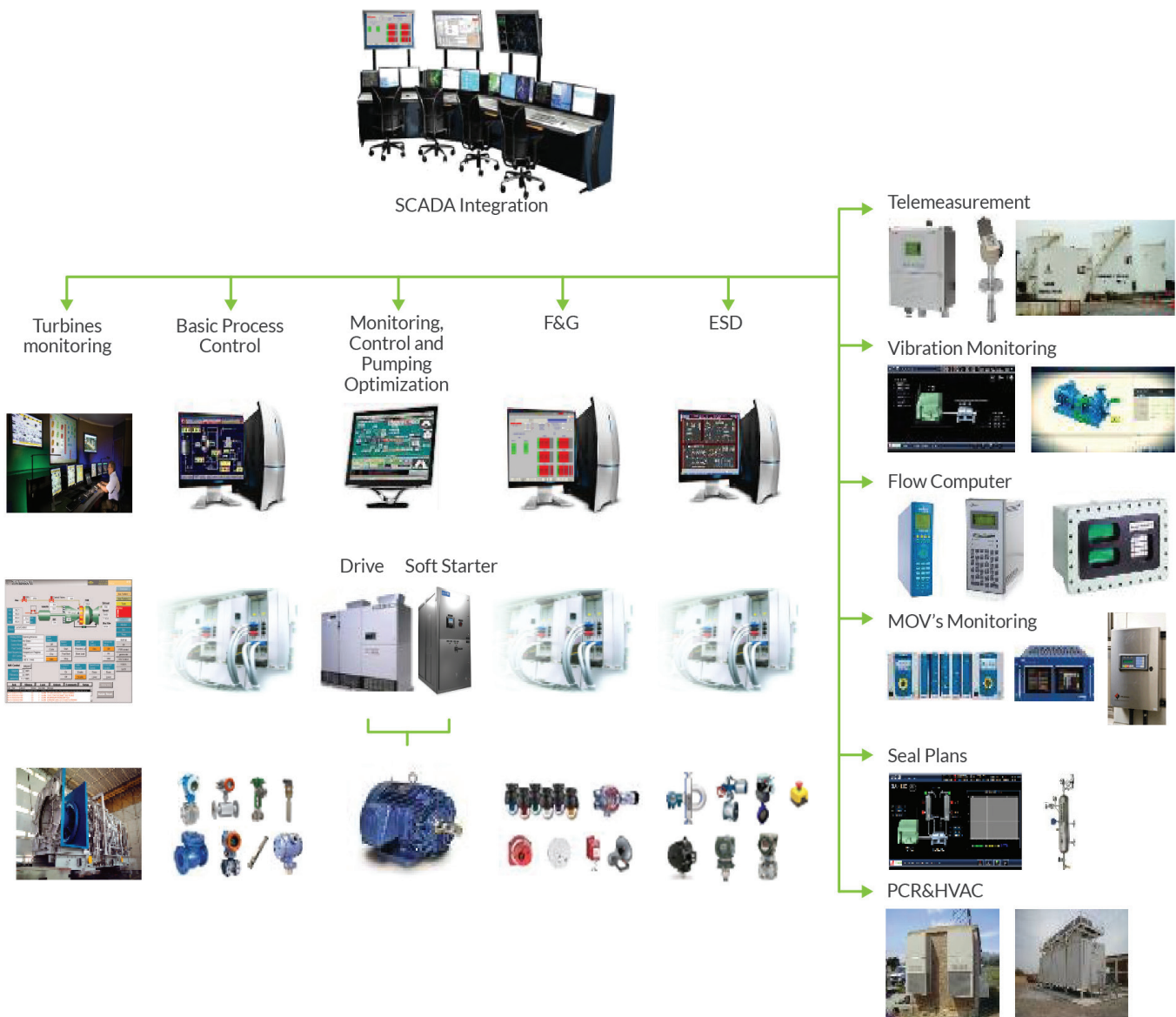
The system is a set of useful tools to help control and monitor assets performance in real time and automatically respond to problems detected by sensors in a practical and easy-to-use interface.

In the last 11 years DigiFlow™ system has been implemented in more than 193 sites, 160 turbines, 307 motors and 500 Shut-Down Valves.

Benefits

- ▶ **Monitoring and diagnosis**
Monitoring of the sensors and at the same time generating a database to analyze to improve the performance of the KPIs.
- ▶ **Maintenance savings**
Schedule the maintenance of your assets, avoiding for un-scheduled production, improve repair times.
- ▶ **Asset performance optimization**
Maximize the production of your assets, balance reliability, performance and cost of production.

SCADA Integration



DigiFlow™ Modules

▶ **PREDICTIVE CONTROL**

Discovers time series patterns using machine learning, pre-packaged machine learning for Predictive Operations.

▶ **Operational Intelligence**

Optimize systems for maximum KPI performance, quickly adjust to changing conditions.

▶ **SCADA**

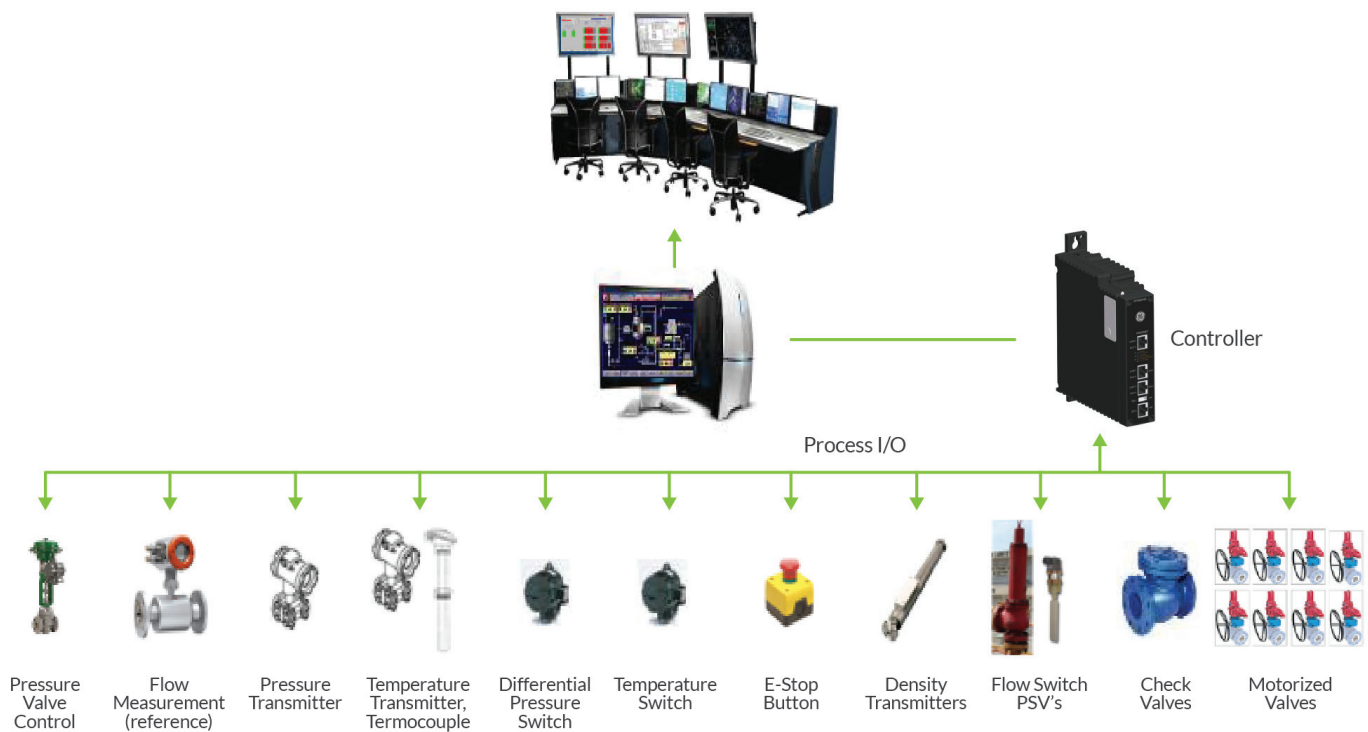
Systems, PLCs, DCS, IED, HMIs and much more by maximizing your operational environments visibility, security and control.

▶ **SCADA**

System composed of sensors, logic solver and final control elements designed and installed to protect personnel, equipment and environment by taking the process to a safe state.

▶ **PIPELINE INTEGRITY MANAGEMENT SERVICES (PIMS)**

Basic process control



DigiFlow™ is a trademark of AMI International SAPI de CV. All other products mentioned are registered trademarks and/or trademarks of their respective companies. All specifications in this document are subject to change without notice.